

Infrastructure to Support Growth in Texas

Feb. 13, 2025

Phil Wilson
General Manager



Topics

Growing need for power and water

How LCRA is working to help meet that need

LCRA's ongoing commitment to serve



OUR MISSION

—
To enhance the quality of life
of the Texans we serve through
water stewardship, energy
and community service.



Growth in our State and Region

	Population Growth From 2010-2020	Estimated Population Growth From 2020-2023	Estimated Population Growth From 2023-2024
Caldwell County	20.5%	8.7%	N/A
Llano County	10.1%	7.7%	N/A
Travis County	26.0%	3.5%	N/A
Williamson County	44.1%	14.5%	N/A
Hays County	53.4%	16.4%	N/A
Texas	15.9%	4.7%	1.8%
U.S.	7.4%	1.0%	1.0%

Need for Power

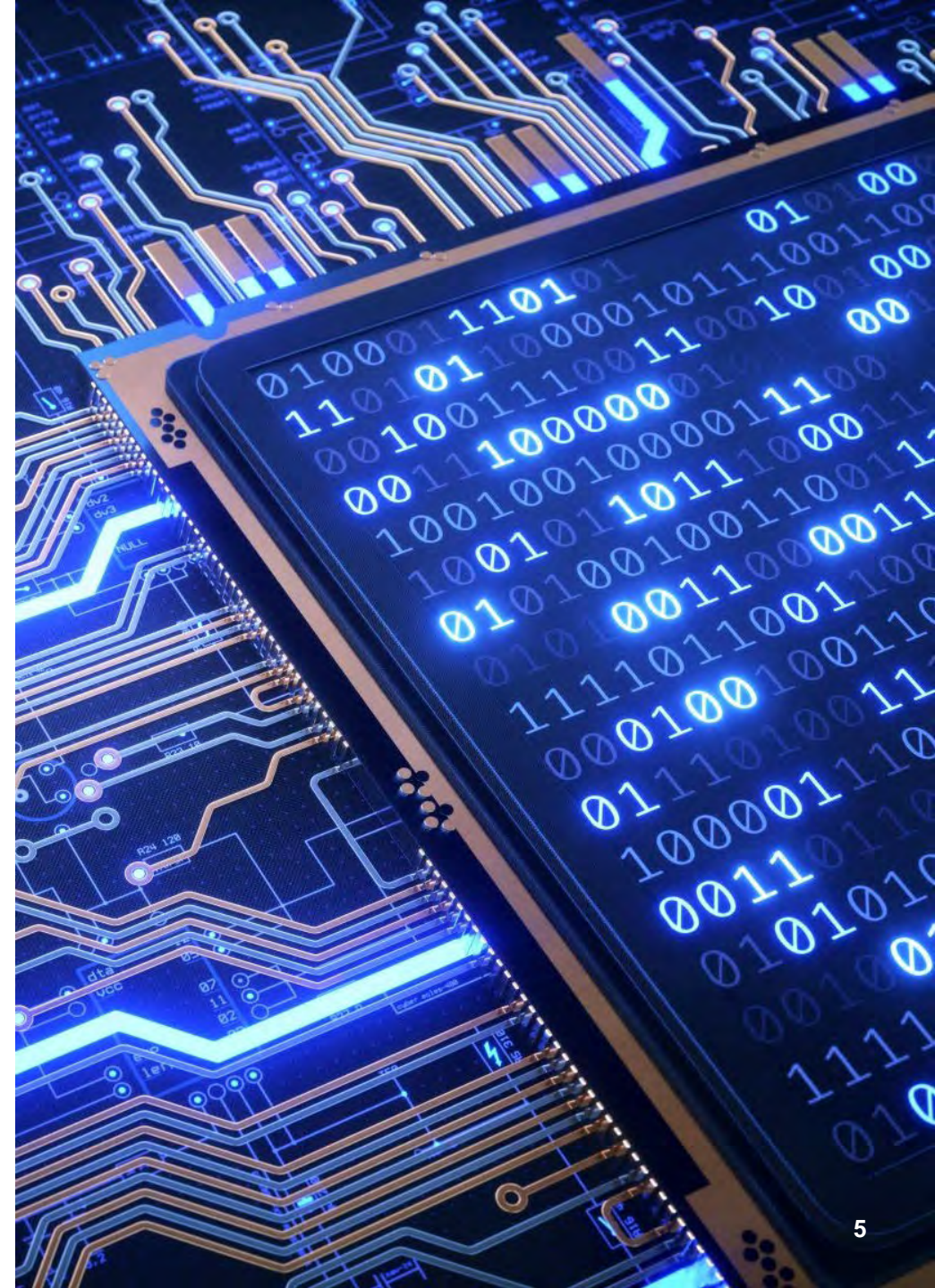
- **Data centers, artificial intelligence, crypto mining increasing need for power**
- **Electric Reliability Council of Texas' all-time peak energy use is more than 85,500 megawatts**
- **ERCOT's peak demand could almost double by 2030**



Artificial Intelligence and Data Centers

- **Data centers now use about 4.4% of all electricity in U.S.**
 - Could grow to about 6.7%-12% by 2028
- **ERCOT data center load expected to increase about 300% by 2027**
- **AI queries currently use about 10 times the electricity of traditional Google search**

Sources: Department of Energy, ERCOT and Electric Power Research Institute



LCRA's Proactive Approach

- **Texas' electricity consumption is expected to grow much faster than in the past**
- **LCRA historically had load growth of about 2%-3% per year**
- **Now LCRA faced with load growth that can be as high as 30%-40% per year**
 - Increasing use of electricity to power cars, trucks, manufacturing, etc. in our economy in 2029 compared with today
- **We are planning for expected demands and are exploring a variety of options**

Timmerman Power Plant

- Two natural gas-fueled peaker units in Caldwell County
- About 380 MW total
- First unit scheduled to be operational in 2025
- Second unit 2026





Additional Power

- **150 MW of battery energy storage capacity to be operational in 2026**
- **Looking at other opportunities:**
 - Additional power plants
 - Power purchase agreements

Transmission

Capital investments of more than \$764 million in fiscal year 2024

Plan to invest more than \$4 billion over next five years



Arbuckle Reservoir





Additional Water

\$174 million over the next five years for additional new water supply projects

Working to increase upper basin water supplies by about 60,000 acre-feet by 2040

Adding Water Supplies

LCRA Water Supply Projects 50-Year Horizon	Estimated Supply (acre-feet per year)
Construction Phase	
Arbuckle Reservoir	Up to 90,000
Engineering/Design/Permitting Phase	
Griffith League Ranch groundwater	Up to 25,000
Lake Bastrop Water	Up to 10,200

Water Conservation

- **Make conservation a way of life**
- **Outdoor watering is one of the largest water users in Central Texas in the summer**
- **Firm water customers say 60%-70% is going to outdoor water use on hot summer days**
- **Need new supplies AND additional conservation of supplies**
- **You can help – be an influencer on water conservation**



Maintaining the Dams

- More than \$187 million invested since FY 2010
- Plan to invest an additional \$96 million through FY 2029
- Brings total planned investment to more than \$283 million by FY 2029





Broadband

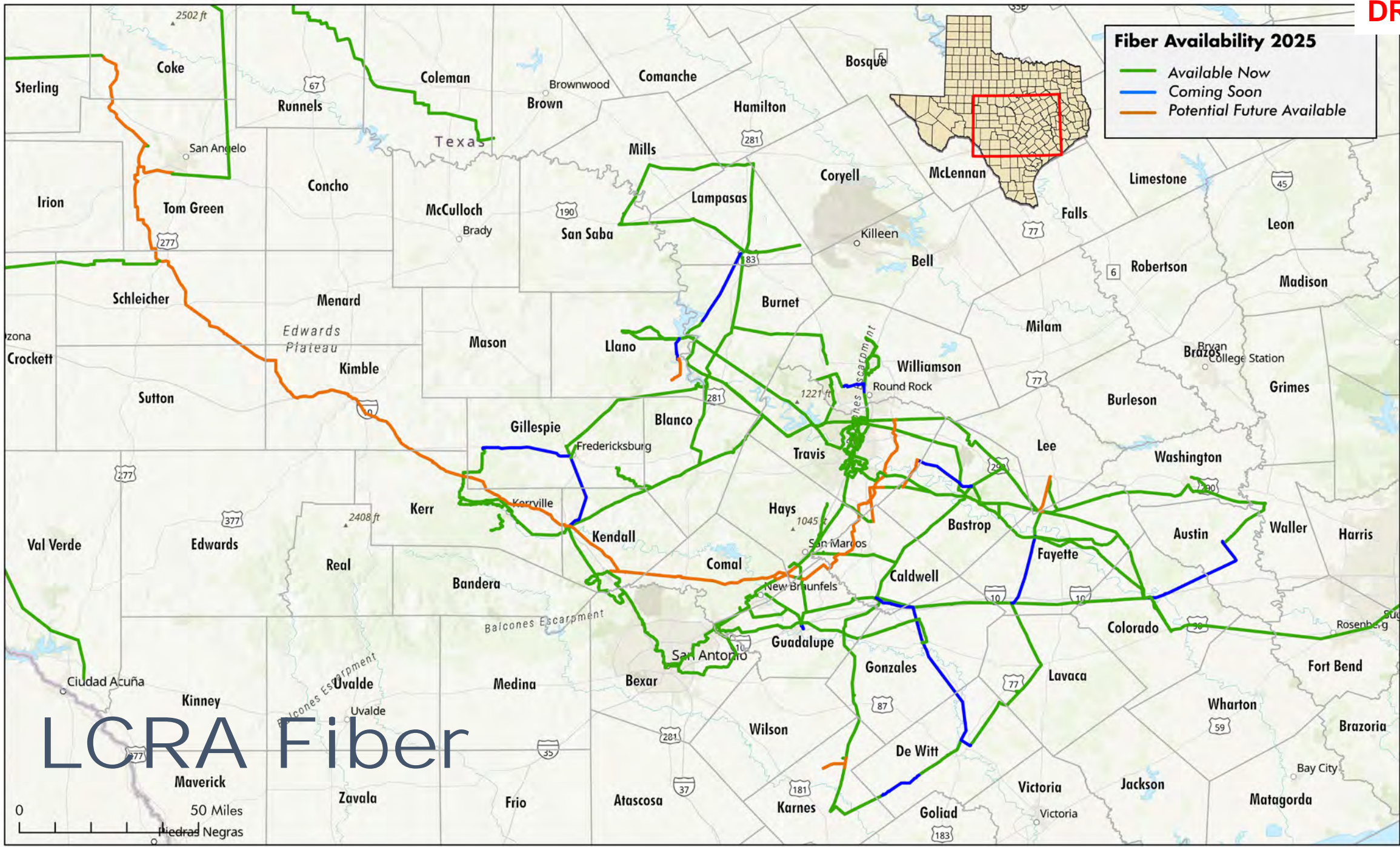
LCRA owns more than
2,700 miles of fiber

Plan to add more in the
coming years

Use our fiber capacity and
facilities to serve as the
“middle mile”

Fiber Availability 2025

- Available Now
- Coming Soon
- Potential Future Available



LCRA Fiber

0 50 Miles

Radio System

Currently covers more than 50 counties and more than 50,000 square miles

Working to expand our coverage to a 102-county service territory





OUR VISION

—
We will be the public utility that sets the standard for excellence.



LORRA

ENERGY • WATER • COMMUNITY SERVICES